

BED No.	DATE	Q.A. CHECK	SETUP	FITMENT	STEELWORK	CONCRETE	DOCKET No.	FINISHER	LIFTED / DATE	SUPERVISOR	PHOTO	DIA

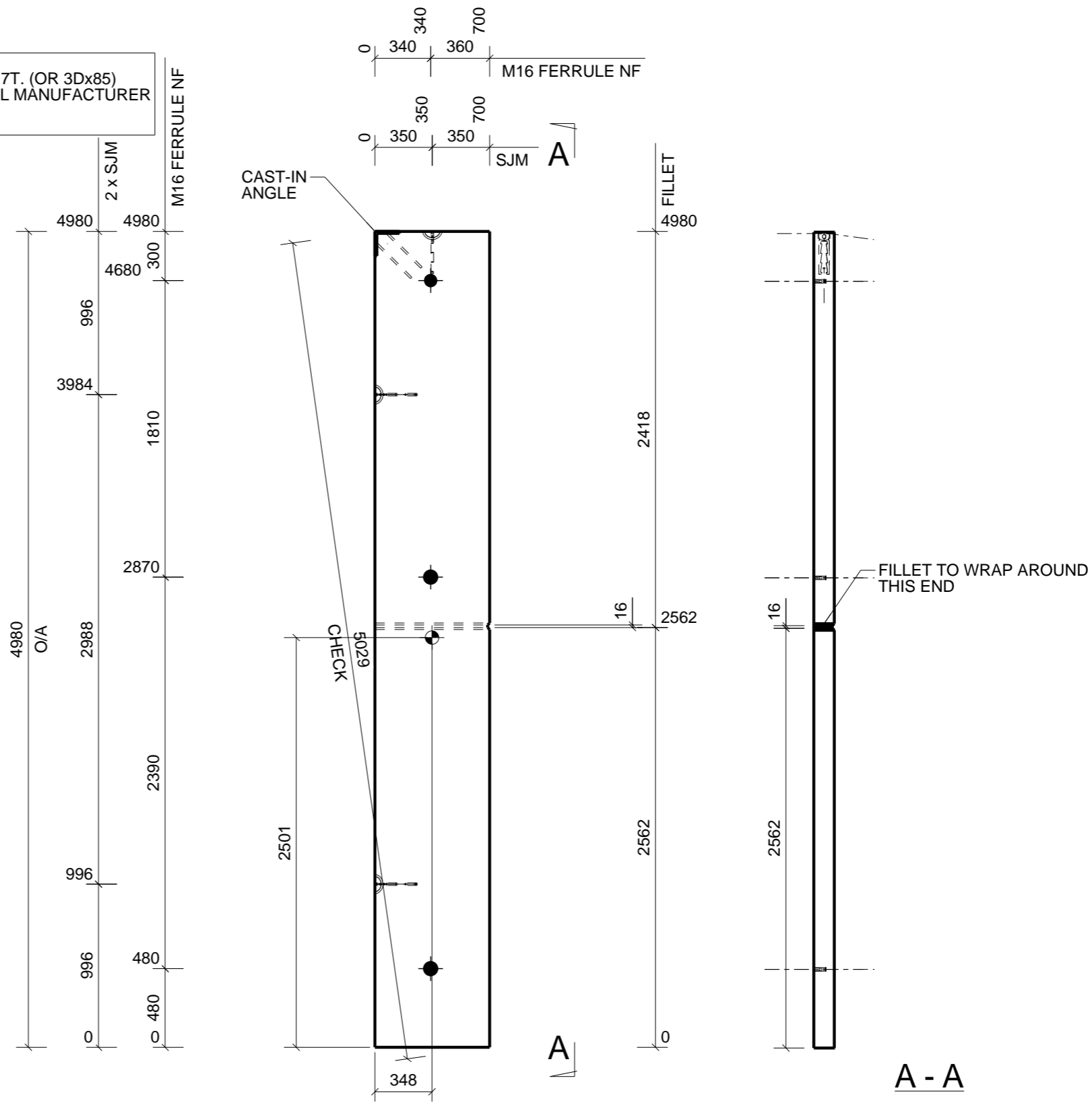
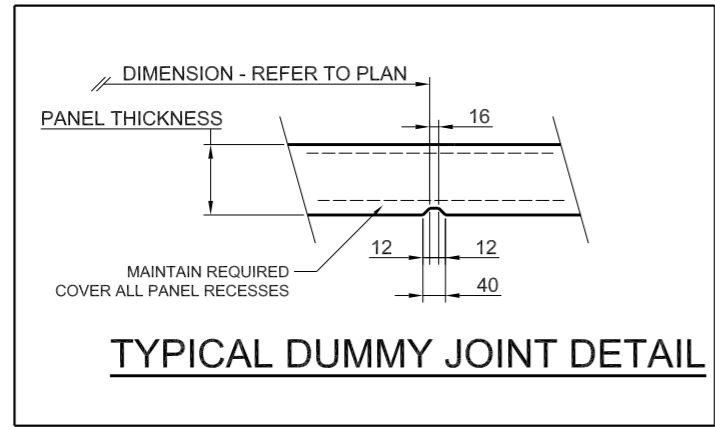
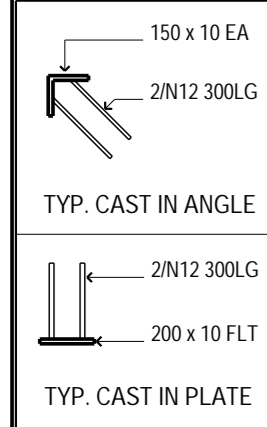
PRE POUR:-

BEDS CLEANED	Y / N
F'WORK CLEANED	Y / N
FORM OIL APPLIED	Y / N
FORMWORK REQ. INSTALLED	Y / N
FORM DIM'S CORRECT	Y / N
REO CORRECT AS PER SCHEDULE SUPPLIED	Y / N
COVER CORRECT	Y / N
GROUT TUBES CORRECT	Y / N / NA
BASE ANGLES IN CORRECT POSITION	Y / N / NA
FERRULES IN CORRECT POSITION	Y / N
PROP FERRULE SIZE & TYPE CORRECT	Y / N
LIFTERS - SIZE & TYPE CORRECT	Y / N
LIFTERS - INSTALLED CORRECTLY	Y / N
BAFFLE JOINTS INSTALLED & CORRECT	Y / N / NA
AIR HOLES DRILLED IN ALL REBATES @ 500mm CTRS.	Y / N / NA
PENETRATIONS SIZE & TYPE CORRECT	Y / N / NA
PENETRATIONS IN CORRECT POSITION	Y / N / NA
PENETRATION CORNER BARS IN PLACE	Y / N / NA
KEY JOINTS FORMED CORRECTLY	Y / N / NA

REINFORCEMENT DETAILS:
 1. REFER TO CCCE TYPICAL DETAIL DRG-S09 FOR ALL TYPICAL TRIMMER BAR & REINFORCEMENT DETAILS TYPICAL AROUND VOIDS & OPENINGS ETC.

LIFTING NOTES:
 1. LIFTERS TO MANUFACTURERS DETAILS. LIFTERS TO BE MIN 7T. (OR 3Dx85)
 2. LOCATIONS INDICATIVE ONLY & TO BE CONFIRMED BY PANEL MANUFACTURER
 3. ALL LIFTERS TO HAVE N16/500 TENSION BARS TYPICALLY.
 4. LIFT STUDY AS PER CCCE DESIGN

QA CHECK COMPLETED BY:-



REINFORCING MESH	SL 82 CENTRAL
PERIMETER BARS	N12 CENTRAL 600 COG/LAP TYP.
CONCRETE GRADE	40 MPa
CONC F'c AT LIFTING	32 MPa
PANEL THICKNESS (mm)	125
PANEL AREA (m²)	3.486
PANEL VOLUME (m³)	0.435
PANEL WEIGHT (T)	1.089
LIFT POINTS	3 REID '3Dx85' - 8.5t
CAST IN FERRULES TILT-LIFT M20x85	FF NF
CAST IN FERRULES TILT-LIFT M16x75	FF NF 3
CAST IN FERRULES TILT-LIFT M12x75	FF NF
CAST-IN PLATES	1
VOID POCKETS	
DOWEL VOID TUBE No. & SIZE	
GROUT TUBE Ø50 CORRO	
STRONG BACK	
MISC. ITEMS	
FACE FINISH (N.F)	STEELTROWEL
PANEL MARK	PP-13

POST POUR QA

CORRECT OIL APPLIED / MOPPED CORRECTLY YES / NO COMMENTS:-

PANEL FINISH % _____ COMMENTS:-

NON CONFORMANCES: _____

CORRECTIVE ACTIONS: _____

READY FOR SITE: _____ DATE: _____

REV	DESCRIPTION	DRAWN	APP	DATE
1	PANEL REVISED TO SUIT LIFT DESIGN	JL	DH	11.02.2019
0	ISSUED FOR CONSTRUCTION	JL	DH	08.02.2019
A	ISSUED FOR APPROVAL	JL	-	05.02.2019

HVSD
 HUNTER VALLEY STRUCTURAL DETAILING
 Jeremy@hvstructural.com.au
 ABN: 79 626 342 783

PROJECT:- PROPOSED UNITS - RIVERSIDE DR, MAYFIELD WEST

PRECAST PANEL - MK " PP/13 "

DRAWN:- J.LITTLE	CHECKED:- DH	DRAWING No:-	SHT:-	REV:-
DATE:- 11.02.2019	SCALE:- 1:30	2039 - PP-13		1